



REACH INCLUSIVE ARTS



ANNUAL REPORT 2023 - 2024



Supported using public funding by
**ARTS COUNCIL
ENGLAND**



Walter Guinness
Charitable
Trust



AMMCO
Trust



St James's
Place



Blagrave
investing in
young people

Report from the Chairman

2023/24 was a challenging but positive year for Reach Inclusive Arts as we continue to evolve the organisation.

We were able to stage the Big Hat Cabaret for the first time since COVID, a fantastic celebration of talent and fun, and we saw work get underway for the next tour of Partner's Theatre Company as well as planning for our new young people's drama group, Neon Lights.

The need for ongoing change is highlighted by the fact we ended the year with a small financial deficit, reflecting the challenging funding environment and the amount of staff time needed on implementing fit-for-purpose policies and structure to safeguard our future. This will continue to be a major focus of our efforts and funding bids for next year.

It is exciting to be presenting this annual report in our updated branding for the first time with a new logo which was selected by our participants and I believe encapsulates the creativity, passion and variety of arts at the heart of our organisation.

I feel a sense of immense pride seeing our participants learn new skills, exhibit or perform their work and attend our groups with a smile on their face so as always I offer my heartfelt thanks to all those involved for supporting us over the past year.

James Robathan

Chair of Trustees





For over 40 years Reach Inclusive Arts (RIA) has been the only local charity providing a variety of artistic opportunities, for people of all ages, and with a range of disabilities and additional needs, in Swindon and the surrounding county of Wiltshire

Many of our participants have learning disabilities, physical disabilities, mental health issues, sensory impairment and may be experiencing social disadvantages such as loneliness and isolation.

The charity aims to leave a lasting sense of acceptance for disadvantaged people through the arts, exhibition and performance.

RIA creates opportunities for people to take part in drama, rehearse, perform, provide backstage support, create, paint, draw, exhibit, tour and showcase how talented they are. The activities often offer the opportunity to convey something about the lives of the participants, their feelings and experiences highlighting the issues that affect them.

RIA prides itself on developing creative talents, often with people who have never had that experience before. Quality is paramount with projects fully supported by local theatres and led by professional directors, artists and performers so that participants can grow and develop their skills, producing artistic work that they are proud of and want to share with others.

What RIA participants produce is inspirational and profoundly encouraging, helping others to see their own potential in being part of something that makes a personal difference to them and that brings happiness and reassurance to others.

RIA 2023-2024 Projects

Partners Theatre Company - Drama Group for Adults, meet weekly on a Monday at The Wyvern Theatre.

Right Time for Art - Art Group for Adults, meet weekly on a Tuesday at The Wyvern Theatre.

Big Hat Cabaret - A variety showcase of the skills and talents of children and adults. Many people involved have disabilities or a range of additional needs.

Neon Lights - Drama group for young people aged 16-25 meet weekly at various venues

Partners Theatre Company



The sessions offer up to 15 people the opportunity to rehearse, explore and try new concepts in a safe and supportive environment. Partners Theatre Company (PTC) has a strong reputation for performing quality drama throughout Swindon and Wiltshire.

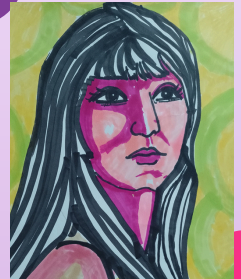
The company created drama for the Swindon Borough Council 'My Swindon' consultation, producing an outstanding, thought-provoking performance, which gave insight into the lives of our participants and the challenges they face that are so often attributed to other people's attitudes. This performance took centre stage at the Big Hat Cabaret. The company also put on a fun Christmas pantomime for friends and supporters. After a successful application to Arts Council England the company are now rehearsing for their autumn tour - 'To The Edge of The World'. This engaging and relatable original drama will be toured throughout the local area. We are so appreciative of the additional support for the tour from Rix Thompson Rothenberg and Hillier Funeral Service.

We have developed our work experience role for young people with Special Education Needs and Disabilities (SEND) with their continued support to PTC.



Right Time for Art

The sessions offer the opportunity to paint, draw, study artists, explore and try new concepts in a safe and supportive environment. The Art Group exhibits their work throughout Swindon and Wiltshire. Weekly sessions have offered up to 15 people the opportunity to develop their artistic skills and talents.



In the summer the group held an exhibition of their work at the Big Hat Cabaret. The art group also created a new logo for this event. Christmas offered the opportunity to create clay decorations that adorned our pantomime set and were sold to raise funds for RIA.

The new year brought the opportunity to work collaboratively with the Alzheimer's Society, creating artwork on the theme of 'Forget - me - nots'. An inspirational development called 'In Reach' captured portraits of Wyvern staff and PTC participants, the artwork is planned to be exhibited at the Wyvern Theatre in the late spring.

The art group also welcomed 2 work experience students from a local SEND school.

Our grateful thanks to AMMCO for their financial support during the year.





Big hat Cabaret

Working with 10 organisations and every age group, almost 100 performers took part in our Big Hat Cabaret, resulting in a vibrant, engaging and uplifting summer's evening of fun and inspiration. Our huge thanks to our staff, supporters, friends and volunteers who made this event such a success.



Neon Lights

We were delighted in December to be awarded 3 years funding from Blagrave Trust to develop a new youth drama group for disabled and disadvantaged young people aged 16-25.

A representative working group involving our young leaders, trustees and student support from a local SEND school have thoroughly enjoyed designing logos, creating publicity, attending launch events, compiling press releases and seeking out venues. We can't wait for the project to start in autumn 2024.



Organisation Development

This year has continued our pledge to maintain the projects and services that RIA is synonymous with. RIA has spent time reviewing our vision and the direction for the future.

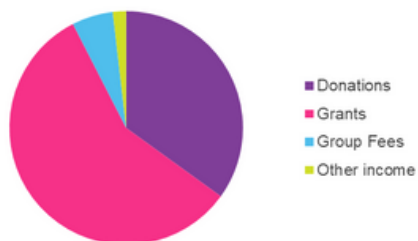
We have created a business plan and determined our 4 key operational priorities. Monthly board meetings have offered the opportunity to closely monitor progress and take remedial action.

In conjunction with this there has been a great deal of focus on developing the trustee board through a skills audit, targeted recruitment and training. We have updated policies and continue to develop our policy framework, systems and processes.

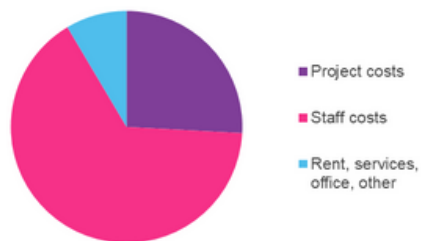
Financial Information

2023 - 2024

Income 2023-24 £49,312



Expenditure 2023-24 £57,717



	2023-24		2022-23	
	£	%	£	%
Income				
Donations	17,238	35%	20,464	30%
Grants	28,358	58%	45,005	66%
Group Fees	2,810	6%	3,024	4%
Other income	906	2%	82	0%
Total	49,312	100%	68,575	100%
Expenditure				
Project costs	14,922	26%	26,336	37%
Staff costs	37,868	66%	39,800	56%
Rent, services, office, other	4,927	9%	5,284	7%
Total	57,717	100%	71,420	100%



Arts Leads

Right Time for Art

Billy Beaumont

Partners Theatre Company

Kerry Boorman

Volunteers

Mark Burford Maull - AKA Annie

Kadabra/Cracker Jack

Carol O'Hara

Hannah Thompson

Sam Sweeney

Every other wonderful person who has supported RIA this year

Trustees

James Robathan (Chair)

Millie Hammond (Treasurer)

Anirban Bhaumik

Susan Marley

Laura Hastings

Special Thanks

Jeni Burchell - Operations Manager

Sue Welsh - Arts Project Coordinator

Caroline Caboche - Finance Officer

Jane Weston - Finance Officer

Billy Bingham - Design Support

Thanks to staff from

Columbia Threadneedle

Nationwide Document Management

Wyvern Theatre

CONTACT

Reach Inclusive Arts, Wyvern Theatre, Theatre Square, Swindon SN1 1QN

Tel No. 01793 520318. Email: info@reachinclusivearts.org.uk

Website: www.reachinclusivearts.org.uk

Charity Number 1116680 Co. Ltd Guarantee No. 5421272

